

INSTALLATION INSTRUCTION SPC LUXURY PLANK & TILES CLICK

It is the responsibility of the installation contractor/fitter to ensure that Luxury SPC Vinyl Flooring are installed correctly and safely, subject to the relative site conditions, sub floor and specified finish. These guidelines are designed to complement the current British Standard BS8201

GENERAL

The room temperature when installing the floor must be between +18°C and 25°C, and the relative humidity in the premises is recommend to be between 25 % and 70 %. The flooring material must be acclimatised in the room for at least 24 hours before installation. The room temperature must be maintained for at least 48 hours after installation. If under-floor heating is installed, Luxury Vinyl SPC Click may be expo-sed to max. +27°C and the sub-floor must be flat and stable.

SUBFLOOR

SPC Luxury Tiles Click can be installed on most substrates, which must be clean, sufficiently dry and firm, free of yield or movement, free of cracks and flat (max 3mm per 2 meter and max 1.2mm per 25cm).

For a concrete substrate, the max. RH is 85 % during installation, measured in accordance with the current industry standard. Any dust or loose particles must be carefully removed. Any stains or spills from paint, oil or similar must be removed. Any unevenness in concrete floors must be leveled. Leveling compound/filler must be sufficiently firm for the area of application in the premises.

INSTALLATION

Measure the area to be installed and decide on the direction of installation. The width of the tile on the last row must be no less than approx. 50 mm. If so, adjust the width of the first row. Install the floor without adhesive: Luxury Vinyl SPC Click shall always be installed so it is a floating construction. Allow an expansion gap around the whole outer border, i.e. also for pipes, stairs, pillars, door frames and thresholds. Expansion gap and maximum installation area is:

Max area 225 sqm., max length or width is 15m. Expansion gap 5-7mm with length/width of 0-10m and 7-8mm with length/width 10-15m.

In rooms with quadratic areas (L, F, T, U shapes), separate the areas using an expansion joint, especially by door openings. If you have any questions, please contact your dealer for further information. You can use the floor immediately after installation. The strips must be secured to the wall, never to the floor.

MISCELLANEOUS

Colour matching between individual tiles can only be guaranteed for tiles with the same production number (see production number on each pack). Always check that all packs have the same production number before installation. We recommend that the tiles be installed in the same direction, in accordance with the mark/arrow on the reverse side of the tile.

Despite the fact that all material is inspected carefully before delivery, faults can occur. Any deviations (damaged or incorrect floor tiles) must be reported immediately to the manufacturer and must not be installed, but must be set aside before installation. If you are in any doubt before installation, always consult us. Any returns must always be approved by the manufacturer, so contact us to make sure they are processed correctly.

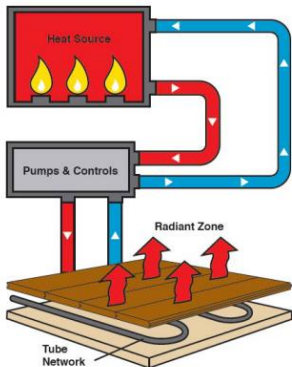
Office chairs that are to be used on SPC Luxury Tiles Click must be fitted with soft type W castors in accordance with DIN 68131. Also note the firmness requirement for the substrate. Rubber wheels, rubber pads, printing ink from plastic, etc. can discolour the floor and leave permanent marks. Always use pads on furniture to protect the floor against surface damage, scratches, etc.

If construction activity is to continue, place protective covering on newly-installed floors. Do not tape the protective cover directly to the floor. The adhesive on the tape can have a negative effect on the floor and some types of adhesive are very difficult to remove.

Please feel free to contact us for additional information.

HEATING SYSTEMS - HYDRONIC

All Radiant Heat systems must have failsafe capability to ensure surface temperatures do not exceed 27°C. The heating system tubes must be 38mm below the surface layer of the concrete slab/thermal mass. 2–3 weeks prior to the installation the thermostat must be set at 21°C, then at 30°C for 3 days. The home should be aired out briefly every day to allow the excess humidity from the thermal mass to exhaust out of the structure.



CLASSIFICATIONS OF HYDRONIC SYSTEM

- Encased in Cement/Gypcrete.
- Encased in Aluminium Hangers, between flooring joists.
- Involve use of Aluminium Transfer sheets between subfloor and a wood deck on top of sleepers.

SURFACE CHANNELLED RADIANT HEAT SUBFLOOR:

Surface-channelled radiant boards, are not acceptable for use under Luxury SPC Vinyl flooring. A minimum of 19mm must be maintained between the floor and the water tubing. This is not possible with these types of systems. This applies to systems with or without an aluminium transfer sheet. Sub floor level tolerances listed previously, also apply to radiant heated subfloors.

HYDRONIC RADIANT HEAT APPROVED PRODUCTS Luxury SPC Plank & Tile + IXPE All

CAUTION: Surface temperature of the vinyl floor should never be set to exceed 30°C. as a function of the heating system.

Temperature sensors must be integrated into system as a fail safe to prevent excessive heat and damage to the Luxury SPC Vinyl Flooring + IXPE.

NOTE: Area rugs and closed bottom furniture placed over radiant heat system will create heat retention in the floor.

This may result in that area exceeding optimum temperature and causing slightly larger gaps and minor distortion in the floor under closed bottom furniture (bookcases, entertainment units, area rugs etc. Hydronic systems are difficult to regulate in that regard.

PASSIVE RADIANT HEAT SYSTEMS: Passive radiant heat systems are not suitable for use with Luxury SPC Vinyl Flooring + IXPE

Any approved radiant system must be combined with the ability to move the air in the room for proper heat distribution and to prevent excessive heat at floor level. Humidity controls must be in place to maintain relative humidity within a 20 to 60% RH range.

INSTALLATION METHODS-HYDRONIC

Floating Installation: Luxury SPC Vinyl Flooring + IXPE, does not require additional pad, and additional pads must not be used.

Glue Down Installation: Not permitted.

Thermal mass must be concrete product and rated at a compressive strength of 2500 psi or greater. Thermal mass with less than 2500 psi compressive strength.

Tubing must be a minimum of 32mm below the surface of the concrete thermal mass.

RADIANT HEAT IN LIGHTWEIGHT CONCRETE– DRYING THERMAL MASS PRIOR TO INSTALL

Two to three weeks prior to the arrival of the vinyl floor and after completion of all wet work at the job site, the radiant heat system should be on at a temperature of 21°C for three weeks and then at 30°C for 2-3 days. During this time, the structure should be well ventilated to prevent moisture buildup (the increased heat is driving the moisture out of the concrete thermal mass during this time). If this is not possible due to weather/ outdoor climate conditions, dehumidifiers should be used to keep moisture from building up in the structure.

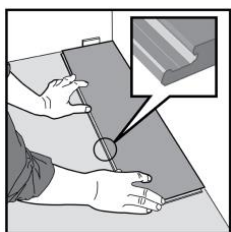
NOTE: Prior to installation, the lightweight concrete moisture content must not exceed 1.5% as measured with a Tramax Moisture.

HYDRONIC RADIANT HEAT / WOOD SUBSTRUCTURE AND ALUMINIUM THERMAL TRANSFER SHEET/HANGERS–PRIOR TO INSTALL

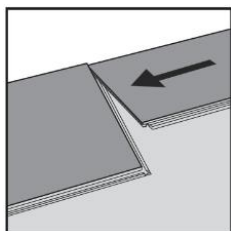
Two weeks prior to arrival of vinyl flooring at job site, the radiant heat system should be gradually brought up to 21°C. Moisture levels allowable in wood sub floor are not to exceed 12%. Once systems have reached optimum conditions, Luxury SPC Vinyl flooring should be brought to job site, not before.

IT IS NOT RECOMMENDED TO USE LUXURY SPC VINYL PLANK & TILE WITH ELECTRIC HEATING SYSTEMS.

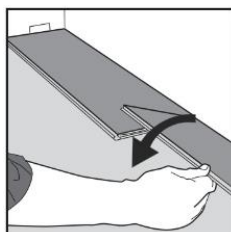
INSTALLATION OF SPC LUXURY CLICK



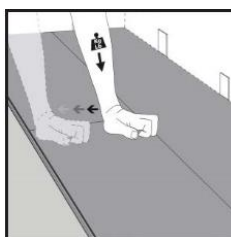
1. First tile, first row.
Place the plank against the wall with 5-10mm distance from the wall on the left.
Later, after 3 rows, you can easily place the floor against the front wall as a distance of 5-10mm.



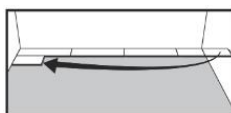
2. Second tile, first row.
Place the tile carefully and tightly against the short end of the first one.



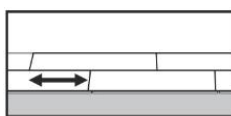
3. Fold down in one single movement. Check that the tiles are tightly against each other. Press or tap on the newly-installed short end. At the end of the first row, leave a distance of at least 5-10mm to the wall.



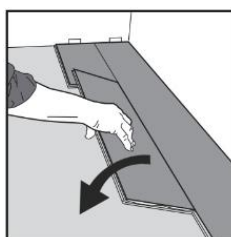
4. Press down with your hand or tap lightly with a rubber mallet on the tile you just installed.



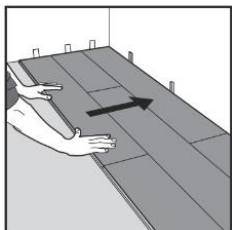
5. Second row.
The first and last tile must be at least 300mm. Keep a small distance from the wall.



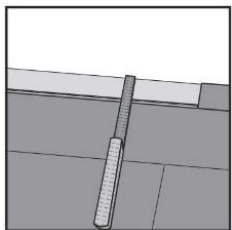
6. Distances between the short sides.
The minimum distance between the short ends of the tiles in parallel rows may not be any less than approx. 300 mm.



7. Second tile, second row.
Place the tile carefully and tightly against the short end of the previous tile and fold it down in one single movement.
While folding down, check that the tiles are tightly against each other.
Press or tap on the newly-installed short end.

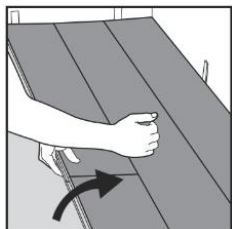


8.
After 2-3 rows. Adjust the distance to the front wall by positioning a distance of 5-10mm.

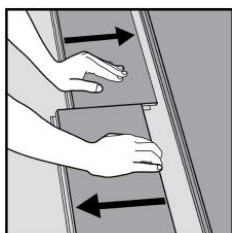


9.
Last row (and possibly the first row).
Minimum width 50mm.
Remember the distance to the wall, 5-10mm.
Cut/saw the tiles lengthways and glue the short ends using PVC adhesive.

DISMANTLING FLOOR TILES

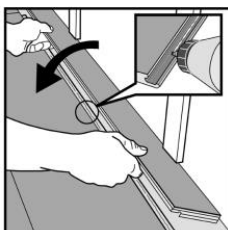
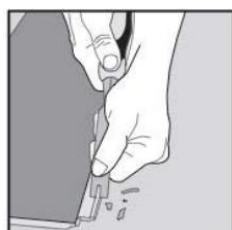


1. Separate the whole row by carefully lifting up and releasing the whole row. Fold up and release the whole long side.



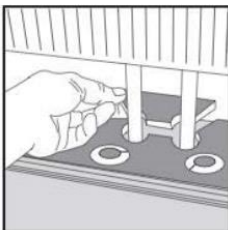
2. Dismantle the tiles by sliding them horizontally. Do not fold up the floor tiles, as this will destroy the locking elements.

SPECIAL INSTALLATIONS - HORIZONTAL INSTALLATION



Cut off locking element using a chisel, apply PVC adhesive to the adjusted strip and press the tiles together horizontally. If necessary, place spacers between the final plank and the wall while the adhesive hardens.

SPECIAL INSTALLATIONS - RADIATOR PIPES



Installation around radiators. Drill holes 5-10mm bigger than the diameter of the pipes. Glue together the block behind the pipes.

Finishing

Remove all spacers, cover any expansion gaps with quarter round or baseboards making sure not to nail through the floor, only into the walls. Fill expansions around any wet areas (sinks, tubs, etc.) with a flexible acrylic sealant or a flexible silicone sealant (neutral cure).

Install coordinating T-moldings as necessary at transitions to other flooring and large areas over 50 ft in each direction.

Taking care of your floor

- moisture. Ensure they are of non-staining variety Regularly sweep the floor to remove loose dirt or grit as these can cause fine scratches.
- For a thorough clean, a range of cleaning products is available (Clean, Remove and Refresh). Avoid the use of regular household cleaners and bleach-based detergents. These could make the floor slippery or cause discolouration.
- Always mop up spills as soon as possible, to reduce the risk of slipping and possible staining.
- Use entrance mats to protect against grit and (not rubber-backed) to prevent any discolouration of the floor.
- Avoid sliding or dragging furniture or other objects across the floor - use floor protector pads to prevent scratching.
- Use castor cups to protect against indentation from heavy furniture.
- Maintain room temperature between 64-81°F (18-27°C) for optimum performance.
- Do not subject flooring to standing water as this will present a slip hazard.